

# ANNA ELIZABETH B



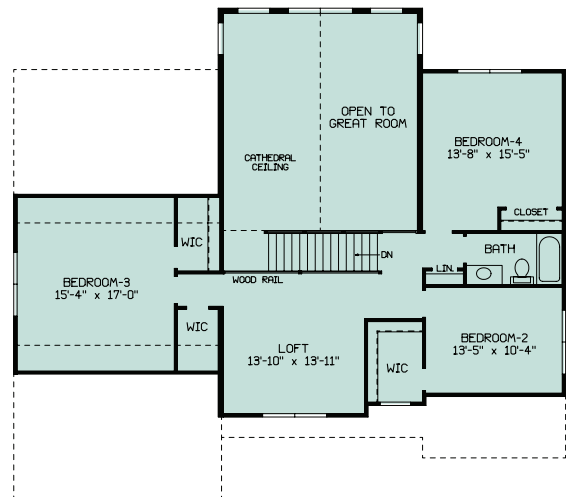
**Rear Elevation**

2,815 Total sq. ft. of living area, 1,661 sq. ft. 1st floor, 1,154 sq. ft. on second floor, 1,661 additional unfinished basement with 3/0 walk out door or egress window well, 474 sq. ft. two car garage with gable entrance. 4 bedrooms, 2-1/2 baths, Master bedroom 1st floor with 5' shower, 6' Soaking tub with ceramic surround, 60" double bowl vanity with two sets of drawers, His and Her walk in closets. Cathedral ceiling Master bath, Two story Great room with cathedral ceiling and two story windows in rear of Great room. 2nd floor 3 bedrooms, loft overlooking Great Room and Full bath, Brick accents on front and four oversized posts to accent front porch. 9' ceilings 1st floor; Two Heat Pumps, one each floor.



ANNA ELIZABETH PLAN B  
54'-0" x 49'-0"  
1661 SQ. FT.

## Anna Elizabeth B 54' x 49' 2815 Sq. Ft.



ANNA ELIZABETH PLAN B  
54'-0" x 49'-0"  
1154 SQ. FT.

