

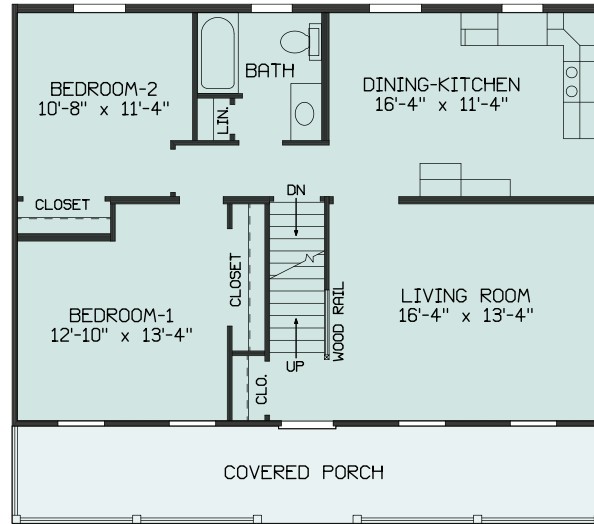
# JAMESTOWN C&D



## PLAN C

936 Sq. Ft. of Finished Area, 1st Floor, 719 Sq. Ft. 2nd floor Unfinished, Unfinished Basement 936 Sq. Ft. 1st Floor Two Bedrooms, 1 Bath. Unfinished 2nd floor with roughin for future bath., 3/4" Oak Hardwood at front entrance, Vinyl Siding Exterior. Two Dormers with shutters on front and full Dormer on rear. Full Front Porch 6' x 36' with vinyl posts and vinyl Railing.

JAMESTOWN PLAN C & D 36'-0 x 32'-0 936 SQ. FT.



JAMESTOWN PLAN C  
36'-0 x 32'  
719 SQ. FT.

## PLAN D

1655 Sq. Ft. Finished Area, 1st floor 936 Sq. Ft., 2nd floor 719 Sq. Ft., Unfinished Basement 936 Sq. Ft., Two Bedrooms one bath on first floor and Two Bedrooms one bath on second floor. 3/4" Oak Hardwood at front entrance. Vinyl Siding Exterior. Two Dormers with Shutters on front and full Dormer on rear. Full Front Porch 6' x 36' with vinyl posts and vinyl Railing. Two Heat pumps, One Each Floor

JAMESTOWN PLAN D  
36'-0 x 32'-0  
719 SQ. FT.

