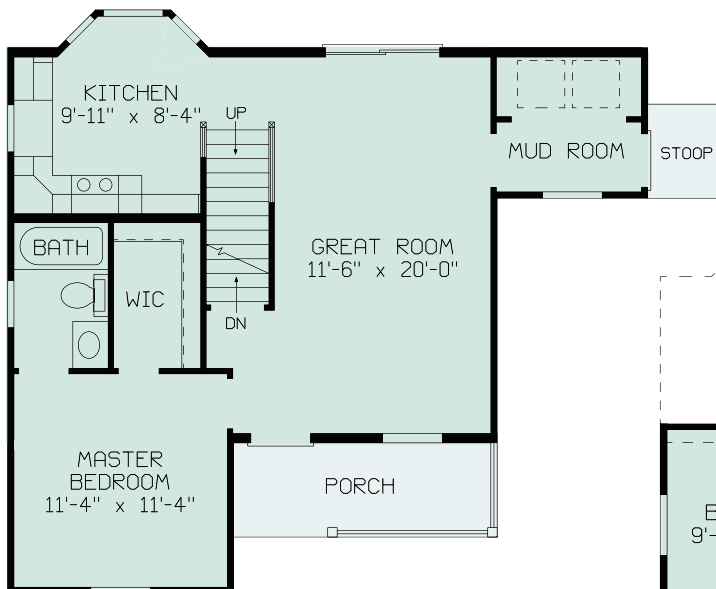


# MANCHESTER

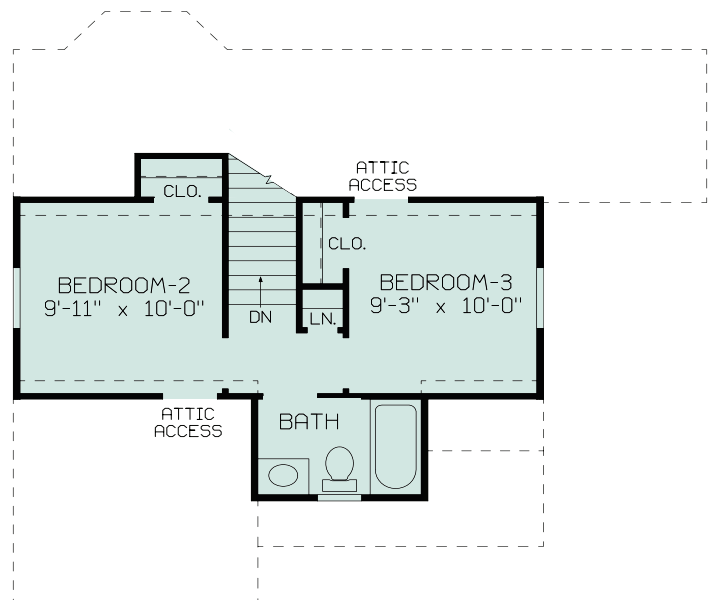


1,036 Total sq. ft. finished living area. 708 sq. ft. additional unfinished basement area with 3/0 walkout door; First floor Master Bedroom with bath and walk-in closet. Eat in Kitchen with bay window. Great Room and Laundry complete the first floor living area. Two bedrooms with a bath on 2nd floor. Patio door in Great Room off rear for easy access to backyard. Includes 5' x 14' front porch. This home was designed to be environmentally friendly with a small foot print but a very nice street appeal and efficient use of space.



MANCHESTER  
34'-0" x 31'-0"  
708 SQ. FT.

**Manchester**  
**34' x 31'**  
**1036 Sq. Ft.**



MANCHESTER  
26'-0" x 26'-0"  
328 SQ. FT.

