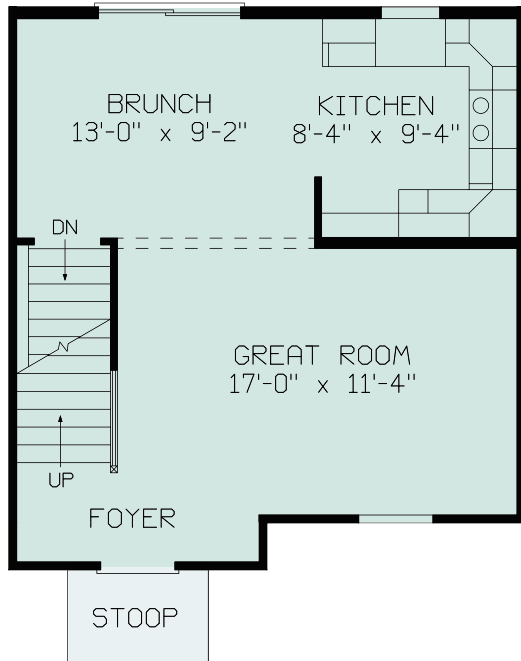


RIVERTON

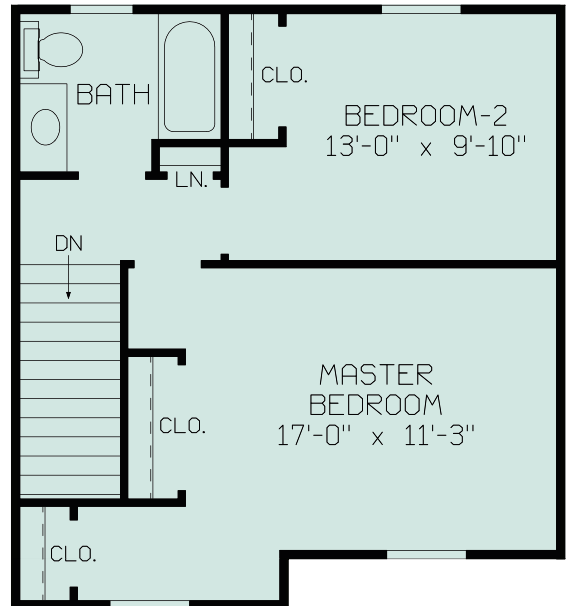


1,012 Total sq. ft. finished living area, 506 sq. ft. additional unfinished basement area with 3/0 walkout door. Galley Kitchen off large Brunch area with patio door to backyard and a large Great Room complete the first floor of this home. Master Bedroom, Guest bedroom and spacious bath are situated on the second floor away from the active living area. With a width of 22' this home is ideal for a narrow lot.



RIVERTON
22'-0" x 28'-0"
506 SQ. FT.

Riverton
22' x 28'
1012 Sq. Ft.



RIVERTON
22'-0" x 24'-0"
506 SQ. FT.

