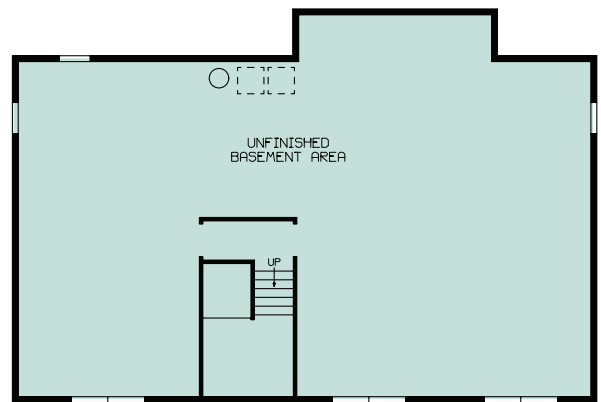
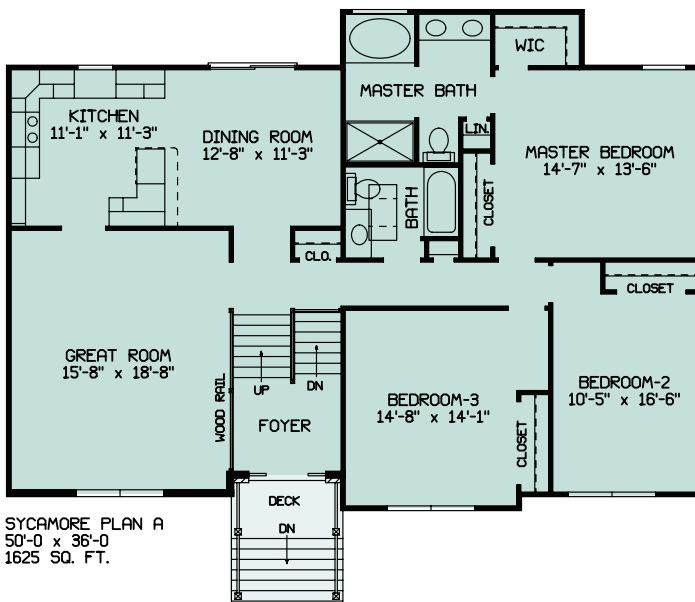


SYCAMORE A



1,625 Total sq. ft. of living area, 1,570 sq. ft. additional unfinished lower level with three twin windows and 3/0 walkout door; 3 bedrooms, Two baths, Master bedroom with two closets, Luxury Master bath, 60" double bowl vanity with two sets of drawers, 5' shower with floor and 5' soaking tub. 3/4" oak hardwood flooring in foyer and wood railing between foyer and Great room. Front entrance with 4' x 8' deck with steps to grade and maintenance free railing, brick front lower level and around front door.

Sycamore A
50' x 36'
1625 Sq. Ft.



SYCAMORE PLAN A
 50'-0" x 34'-0"

