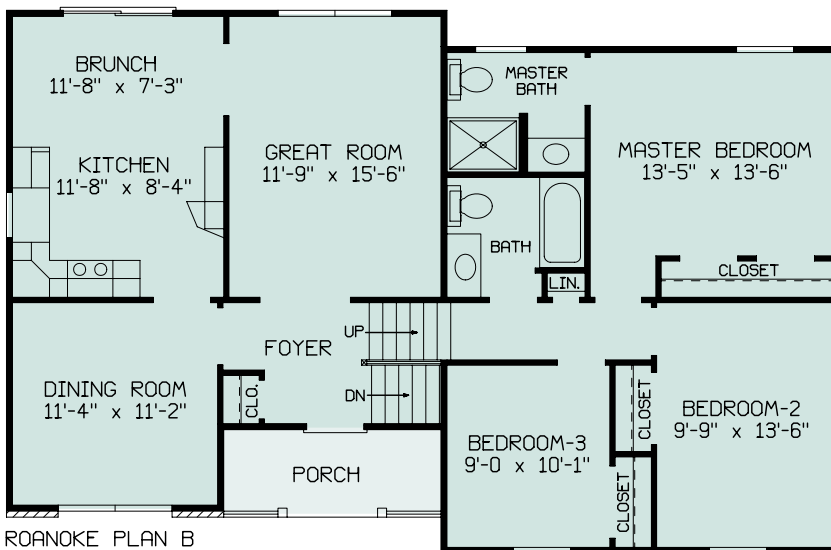


ROANOKE B

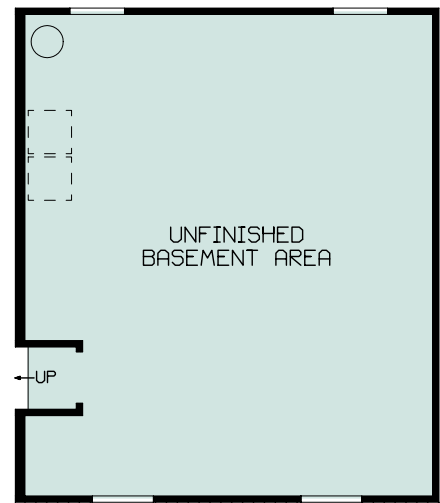


1227 Total sq. ft. living area, 572 sq. ft. unfinished future living area under bedrooms, 3 Bedrooms, 2 bathrooms, Master suite with 36" single bowl vanity, 4' shower with door, and closet with his and her sides. Kitchen/Brunch area with exterior access by patio door and adjacent to Great room, 4'10" x 12' Front porch with 6" vinyl maintenance free turned posts and maintenance free vinyl railing. Brick front of Dining room and unfinished lower level, Exterior bedrooms, Foyer area, sides, and rear covering vinyl siding.

Roanoke B
46' x 30'
1227 Sq. Ft.



ROANOKE PLAN B
 46'-0" x 30'-0"
 1227 SQ. FT.



ROANOKE PLAN B
 22'-0" x 26'-0"



Illustrations and floor plans are subject to change. Refer to actual blueprints for items included in your home. ©Heckman Homes.