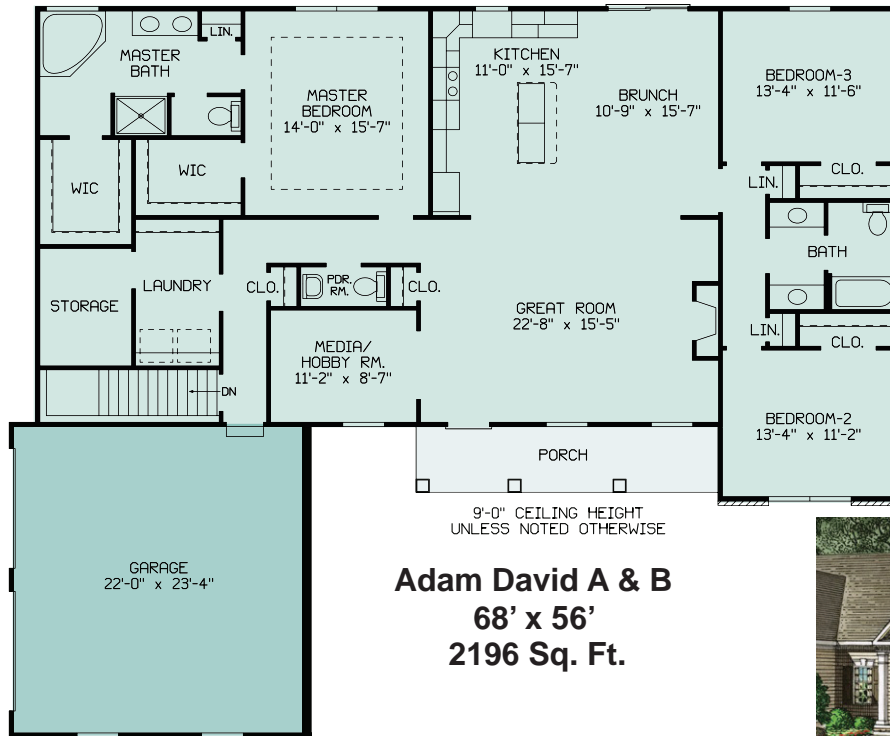


ADAM DAVID



Elevation A

2,196 Total sq. ft. finished living area, 2,196 sq. ft. additional unfinished basement area with 3/0 walkout door. This home is overflowing with closet and storage space. The Master Suite includes a tray ceiling in the Master Bedroom, Two oversized walk-in closets, a spacious bathroom with 5'x5' corner soaking tub, 60' double bowl vanity, 4' shower with door and separate toilet area. Open living area with island in the Kitchen, large Brunch area and Great Room with gas fireplace, Media/Hobby Room located next to the Great Room. Powder Room conveniently located in hall out of site of active living area. Bedrooms 2 & 3 located away from everyday living with two single bowl vanities and separate area for tub/shower and toilet. Large Laundry room and interior storage room off hall to garage. This home features two distinctive elevations. Elevation A with two dormers or Elevation B with porch gables. Exterior is enhanced with shakes and brick to give it a classic look but keep it in the budget.



9'-0" CEILING HEIGHT UNLESS NOTED OTHERWISE

Adam David A & B
68' x 56'
2196 Sq. Ft.



Elevation B

ADAM DAVID
 68'-0" x 56'-0"
 2196 SQ. FT.

Illustrations and floor plans are subject to change. Refer to actual blueprints for items included in your home. © Heckman Homes

